



IMS

PT. INOKON MULTI SARANA

COMPANY PROFILE



indokonmultisarana.com



021 22632551

ABOUT INDOKON



PT. Indokon Multi Sarana (IMS) was established in 2014 to address the growing demand for trusted and reliable contractors in the construction industry. Our company is committed to providing the best solutions by leveraging our solid teamwork and expertise. We understand the importance of delivering high-quality results and aim to be your trusted partner in meeting your construction needs.

With a dedicated team of professionals and a strong commitment to quality and customer satisfaction, we have successfully completed several projects over the years.

In line with our vision to be a leader in the construction space, we are constantly looking at innovative ways to enhance our service offerings and provide value to our clients.

We understand that construction projects can be complex and challenging, which is why we have a rigorous project management system in place that ensures timely delivery and adherence to quality standards. Our team of experts is equipped with the latest technologies and tools, which enables us to execute projects of any complexity with ease.

As a company, we take great pride in our ability to work collaboratively with our clients and understand their requirements. This allows us to provide tailor-made solutions that are not only cost-effective but also meet the highest standards of quality and safety.



TABLE OF CONTENT



ABOUT COMPANY

BOARD OF MANAGEMENT

PROJECT CONSULTING

CONSTRUCTION PROJECT

OUR PORTFOLIO

VISSION MISSION

Vision

- The world is in harmony with people and the environment we try to realize the dream.
- To be reliable and trusted company in global.



Mission

- Building a mutual beneficial relationship with every partner and client.
- Building the company reputation to be well known as reliable construction company globally.

WHAT WE DO

Our company core business are civil engineering with 3 objectives



Building Interior Exterior

We understand that building interior and exterior design are vital aspects of creating functional, visually appealing, and comfortable spaces. IMS priority is meet the needs and preferences of clients while also considering factors such as safety, accessibility, and sustainability

Civil Construction

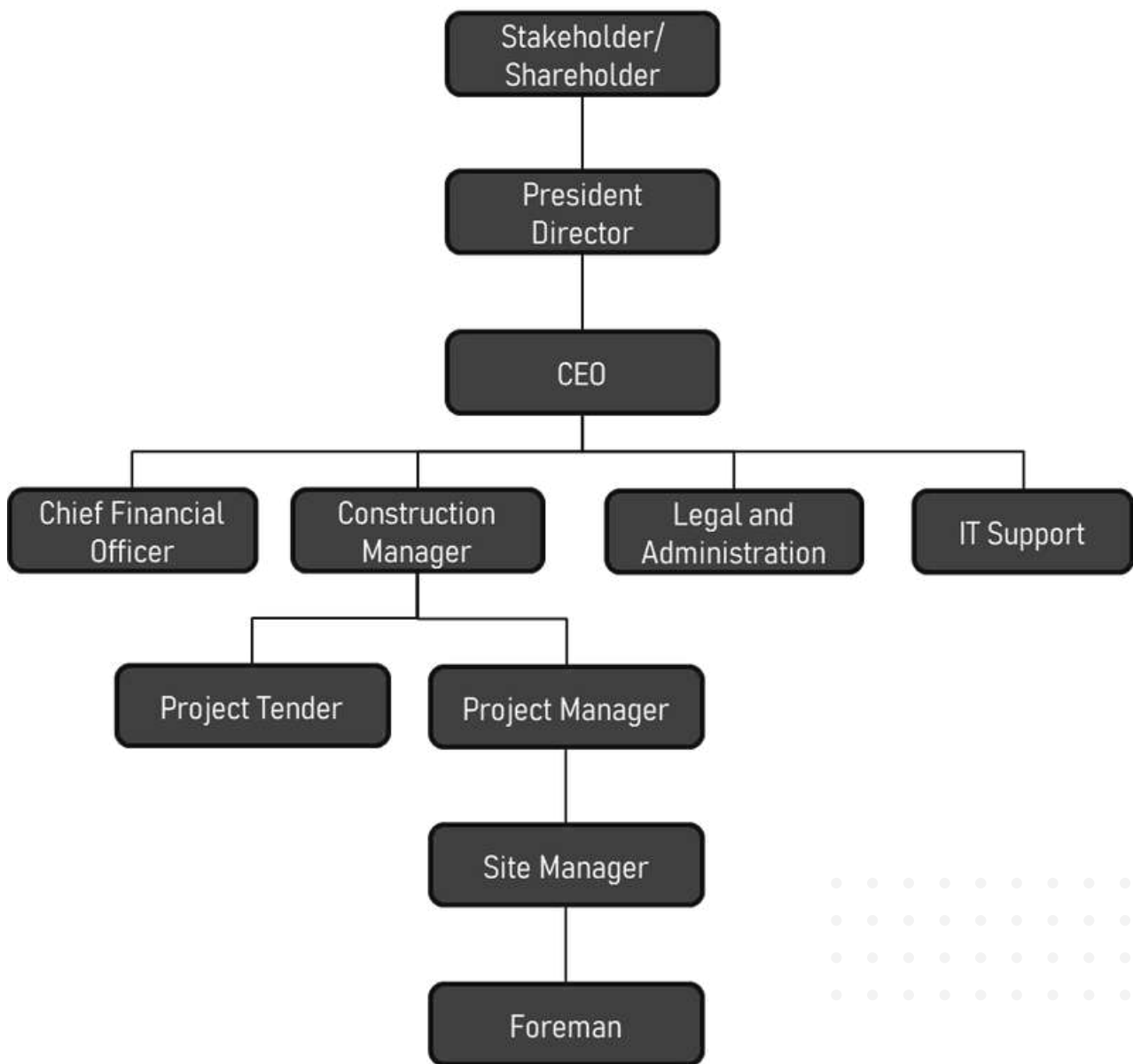
Building civil infrastructure, such as bridges, tolls, pipelines, city water dams, and other heavy infrastructure. IMS wants to support economic growth and development by enabling efficient transportation, resource utilization, and environmental management..



Project Consulting

IMS provide operational, strategic, or technical expertise to projects. We collaborate with clients to determine project parameters, develop project plans in line with business objectives, and assign project tasks and resources.

BOARD OF MANAGEMENT





PROJECT CONSULTING





PT. IMS assist GS E&C, global experienced company from South Korea, to complete the Final Report of Feasibility Study for Pekanbaru water supply project.



We assist MLTM (Korean Government) for Pekanbaru Master Plan



Consulting Services for Public Private Partnership (PPP) Project association with Indonesia Government



CONSTRUCTION

(Several project done by our joint company)



SIAK

Supply and installation distribution pipeline at
Siak Regent Office Complex in 2005



**Bandung
& Bogor**

- o Develop water supply system (SPAM) at
Citeureup Bandung in 2014
- o Raw water supply development at Bogor in
2013



Bandung & Pangandaran

- o Develop water supply system (SPAM) at Ciamis Pangandaran in 2011

- o Develop water supply system (SPAM) at Cianjur in 2012



- o Develop water supply system (SPAM IKK) at Dayeuh Kolot Bandung in 2010

- o Construction of water treatment plant at Siak in 2004

- o Many more



o Installation of HDPE pipeline and ME at PDAM Tirta Kampar Riau in 2014

o Raw water pipeline project at Binong – Bogor in 2012

o Development of distribution pipeline Mempura Village, Kampung Tengah Village, Benteng Hulu Village, and Benteng Hilir Village at Siak in 2006

OUR PORTFOLIO



Renovation of Gedung Dinas dan Pencatatan Sipil
Kabupaten Siak 2012

IMS



Development phase I of SMP Islamic Center at
Siak in 2010



INTERIOR PROJECT

**New Balance &
Adidas Showroom**

IMMS



INTERIOR PROJECT



Warehouse
Design



INTERIOR PROJECT

Client :
PT. Parkland World Serang



Before

To increase the comfort of the staff when working, partitions are provided to limit visitor access from the entrance directly to the staff area.



Staff Room Partition



Staff Toilet



INTERIOR
PROJECT



INTERIOR PROJECT

Client :
PT. Parkland World Serang





PPIC Office | Parkland signature design style with Adidas unique touch

INTERIOR PROJECT



Test Bed Staff Area

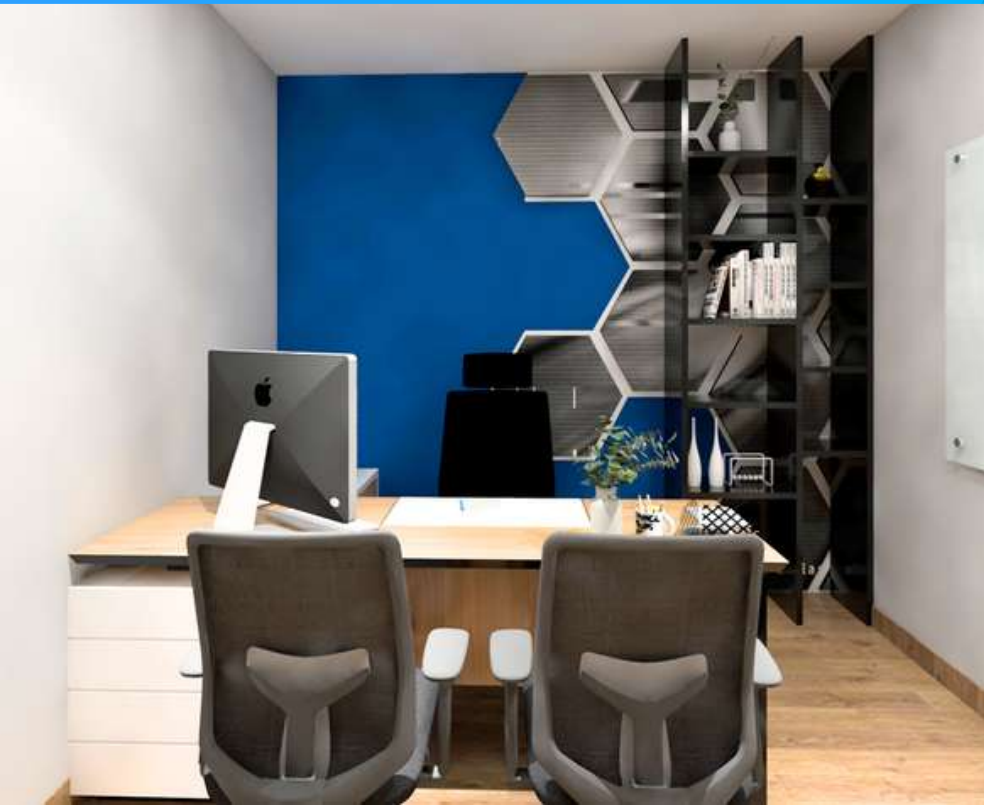


Small Meeting Room

Meeting Room

Client :

PT. Parkland World Serang



The balance between the raw and exposed appearance of the structural elements of a building that blends perfectly with the elegant appearance of a stylish, modern phase.

This gives a unique, different, and very distinctive appearance.

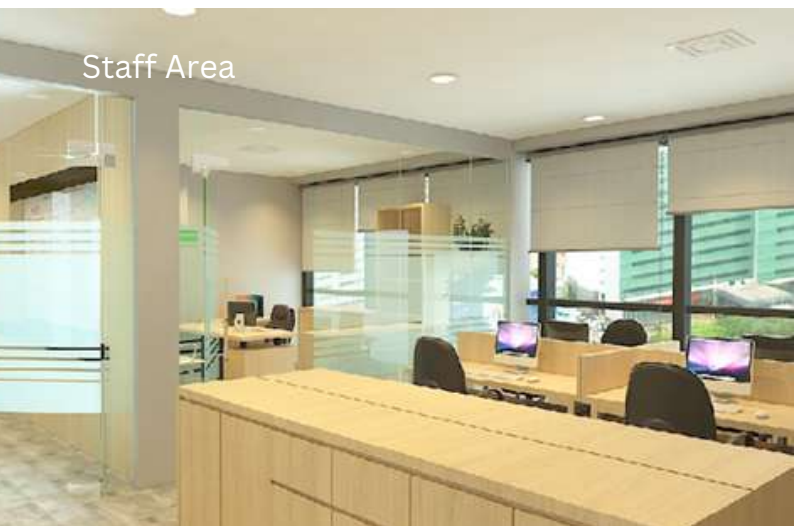
Design Concept : Modern Semi Industrial

INTERIOR PROJECT

Client :
KEITI Office



Waiting Room



Staff Area



STAFF AREA



Client :
ADIDAS Office



INTERIOR PROJECT



Simple Interior and furniture design from models & materials that are easy to find, with some industrial touch for a dynamic modern and cozy design

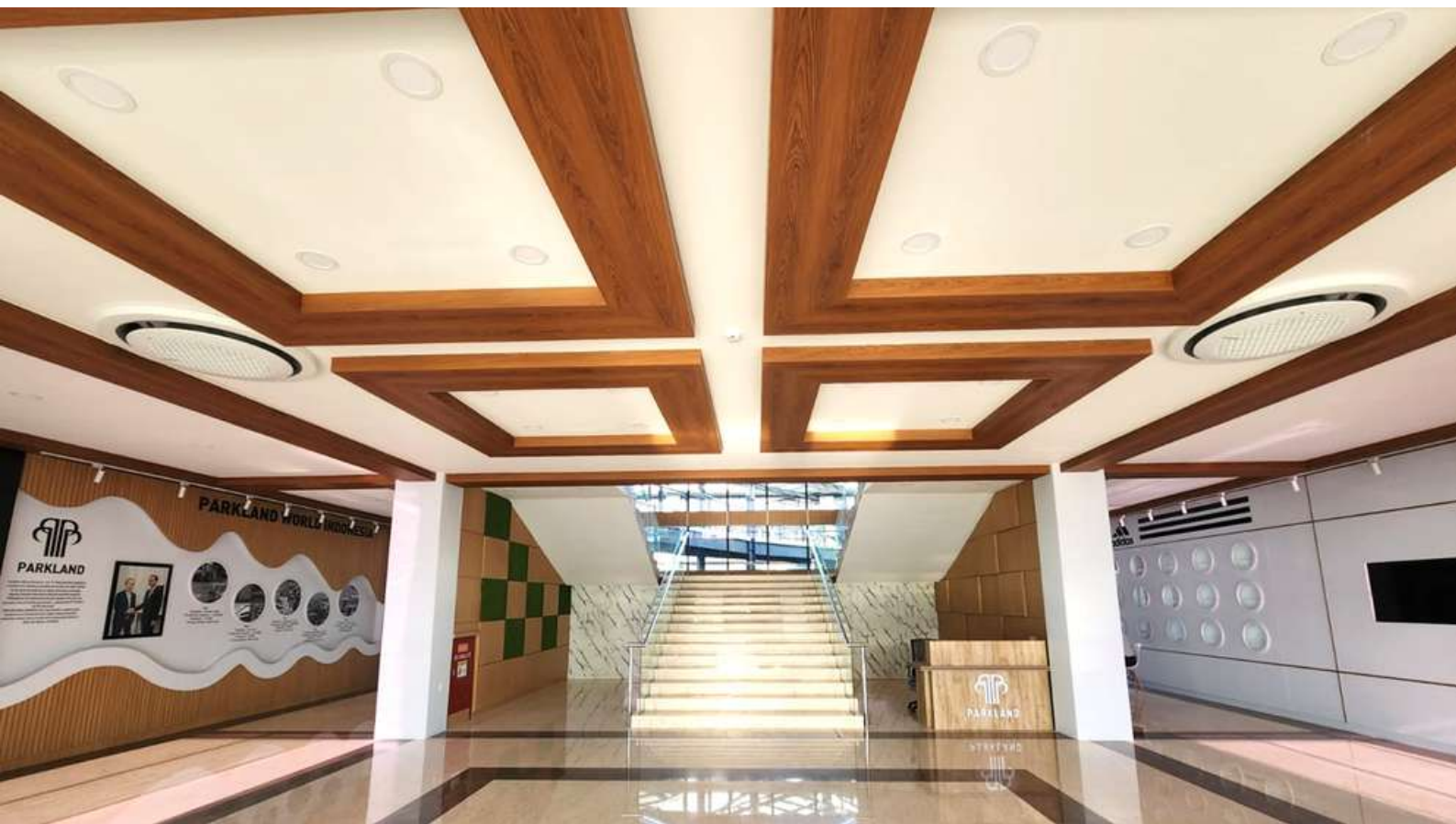


Manager Room 1



Manager Room 2

LOBBY AREA



Client :
PT. Parkland World Rembang

INTERIOR PROJECT

Client :

PT. Parkland World Rembang



Auditorium

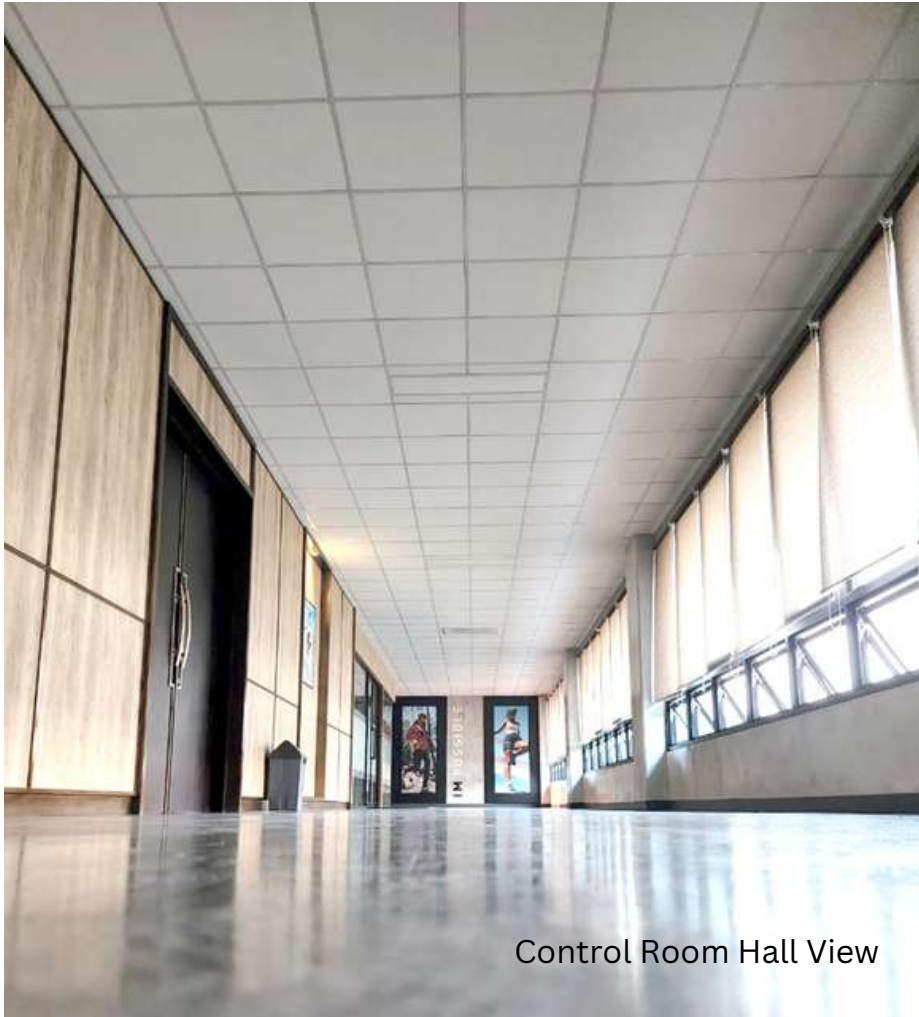




INDO KORN



Reception Dec and Corridor



Control Room Hall View



INTERIOR PROJECT



Control Room





Staff Toilet





PT. INOKON MULTI SARANA



INDOKON

INTERIOR PROJECT



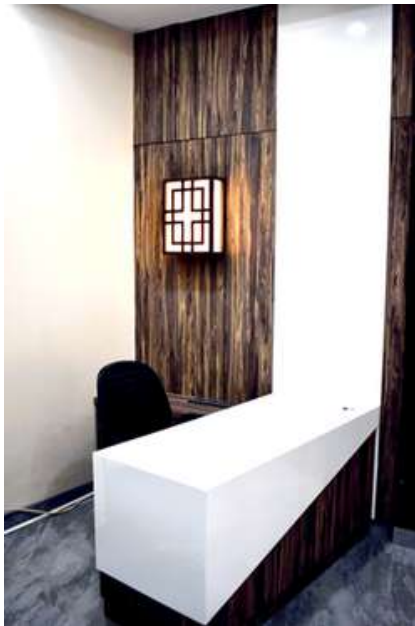
Client :
PT. Taekwang Indonesia



DREAM CENTER



INTERIOR PROJECT



Modern oriental style interior design, a harmonious blend of East and West.

The design style emphasizes the use of natural materials and elements, a muted color palette, and soft, diffused lighting to create a sense of calm and tranquility. //

Client :
PT.GTI Indonesia



DIRECTOR ROOM



EXTERIOR PROJECT





Client :
PT.GTI Indonesia

Project :
Outer Wall Design Using ACP



EXTERIOR PROJECT

Client :
PT. Taekwang Indonesia



TMS



CONTACT US

Epicentrum Walk South 531A
Jl. HR. Rasuna Said
Karet Kuningan – Setiabudi
Jakarta Selatan